



DEVELOPMENT COMPANIES LLC

Contractors and Construction Management

From Idea to Reality . . .



Covenant Place of Lenexa

107-Units, Independent, Assisted & Skilled Nursing
Lenexa, Kansas

HDC Development Companies LLC specializes in construction management and general contracting of commercial, senior and multi-family housing.

Over 8000 housing units and numerous commercial projects have been successfully developed under our direction.

It's this vast experience that allows us to help provide our clients with expertise in development, market analysis, architect and site selection and so much more.

Although our roots are in Minnesota, HDC Development serves clients throughout the

upper Midwest and Western states. We package complete projects consisting of assisted living units, congregate housing, memory care units, foster care, nursing home units, hospital additions, commercial office buildings, multi-family housing and remodels in a cost efficient manner utilizing our strong management team and our reliable network of contractors.

HDC can see your project through from the development of the idea, through project evaluation, design, construction and marketing. Contact HDC Development today and let us show you how our years of experience can benefit you.

HDC Development Companies LLC Services . . .

- Construction Management
- General Contracting
- Idea Development & Research
- Development Coordination
- Pre-Construction Estimating
- Marketing and Design Considerations

“A consistent workload of congregate, assisted living, memory care, foster care, nursing home, hospital additions, commercial buildings and remodels.”

An Experienced Management Team . . .

HDC Development Companies LLC's experienced management team, highly qualified and knowledgeable job superintendents and office personnel have assisted owners with their projects from the development of the idea, through project evaluation, design, construction and marketing to obtain a high quality project.

Partners in the company:

Roger Holtberg
Chief Manager, President

Jim Lemke
Secretary, Chief Financial Manager, Treasurer

The management team works closely with the owner in all facets of project development, including architectural services, design, estimating and overall project management. The project management team has a diverse mix of skills and abilities and brings over 100 years of on-site construction management knowledge to the organization.



Completed in Minot, ND . . .



Elk Pointe Apartments

3 24-Unit Apartments with
54 Double Stall & 18 Single Stall Garages
Minot, North Dakota
(72-Units Total)



Meadow Ridge Apartments

1 36-Unit Apartments
4 24-Unit Apartments
Minot, North Dakota
(132-Units Total)



Southwood Apartments

2 24-Unit Apartments with Garages
3 36-Unit Apartments with Garages
Minot, North Dakota
(156-Units Total)



The Pines on 37th Apartments

2 24-Unit Apartments
2 30-Unit Apartments
1 33-Unit Apartment
Minot, North Dakota (141-Units Total)



Edgewood Vista

Patio Home
Minot, North Dakota



Edgewood Vista

Twin Home
Minot, North Dakota

Senior Housing . . .



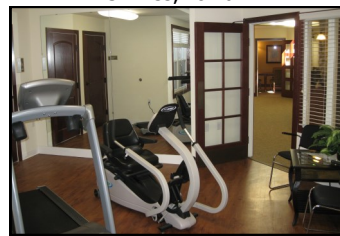
Edgewood Vista

198-Unit Assisted Living/Congregate Housing/Memory Care Units
Bismarck, North Dakota



Kennybrook Village

94-Unit Assisted Living
Grimes, Iowa



Winchester Meadows

47-Unit Assisted Living
Sedalia, Missouri



Senior Housing continued . . .



Arabella Manor—Phase 1 & 2

37-Unit Independent Senior Housing
Alexandria, Minnesota



Meadow Lakes

65-Unit Congregate Housing
Rochester, Minnesota



Edgewood Vista

154-Unit Assisted Living & Memory Care Units
Virginia, Minnesota



River Grand

60-Units Independent Sr. Housing
Grand Rapids, Minnesota

HDC specializes in
giving individual and
personalized attention
to each client.



Red Lake Senior Housing

26-Units Senior Housing
Red Lake, Minnesota

Building Better Lives . . .

By Joel Cornell

HDC Development Companies' recently completed Glencoe Assisted Living Center demonstrates their commitment to quality construction and improving the lives of the residents.



Right out of high school, with a true love for building and working in the great outdoors, Jim Lemke began his career in the construction industry as a carpenter. Nearly half a century later, Lemke is still learning and building at full speed, with no signs of slowing down.

"Construction is one of those things, where you just can't beat the amount of satisfaction you feel after you look at what you've built over the course of the day," Lemke said. "I'm 59 years old and I'm not getting any younger, but I can't help but to keep feeding myself a constant stream of daily challenges, even though I'm not necessarily putting the hammer to the nail anymore."

As Senior Vice President of HDC Development Companies, LLC, a construction management and general contracting firm, located in central Minnesota, Lemke works closely with the owners of the projects in all facets of project development, architecture, design, estimating and overall project management. Over 6000 housing units and numerous commercial projects have been successfully developed under the direction of HDC, said Lemke. "It's this experience that allows us to provide our clients with the expertise to complete a successful project."

The firm was founded 30 years ago by a high school science teacher, Hollis Helgeson who had a family background in the nursing home and elderly care business. "He saw a need in the elderly community locally and across the state for more and different types of services," said Lemke. "His vision led to the creation of the development company with the main focus being to assist other communities to meet the needs of the elderly community by building assisted living, congregate, memory care and independent senior apartments." Today,

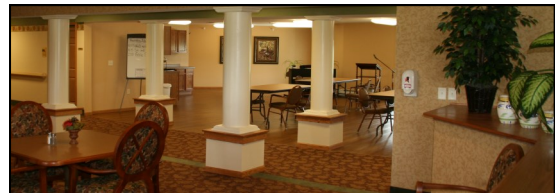
HDC Development Companies is registered in 11 states across the country, from Wyoming and the Dakotas to Colorado, Mississippi, Iowa and Wisconsin, with an annual revenue standing at \$50 million.

At a recently completed project located in Glencoe, Minnesota called the Grand Meadows, HDC Development Companies has demonstrated their capacity for care and attention to detail. The assisted living center features the standard spectrum of amenities for the elderly across 54 units specifically suited for the designated age group. Additionally, the center features 11 units that are uniquely designed as memory care units, with the care of Alzheimer's patients and others in mind.

"We did a number of step-up units, meaning the project was a bit more elaborate than most," Lemke said. "These were done a bit differently than our standards units, featuring granite counter tops, solid wood doors, the whole nine yards. Additionally, the important thing that we understand in projects such as these is that what may seem complex, interesting and bright to us could wind up confusing, stressful or overbearing for someone suffering from Alzheimer's or dementia. We keep our user base in mind when we design, build and manage these facilities, in order to make sure that their care is the absolute top priority."

Over the years, HDC Development Companies has amalgamated a group of subcontractors and architects that bring an astounding amount of insight and attention to detail to bear on each project. Most recently, HDC completed a 132-unit living facility, all over a schedule of just six months.

"Some of our best contractors certainly feel the pressure we can bring to a project," Lemke said. We certainly do put the pressure on them, but we're experienced enough to know the limits. With that pressure on them and on us, as we assume the maximum amount of liability, we come out with the most astounding projects that beat some budgets and schedules that seemed impossible at first. Our partnerships with the owner, architect and contractors make or break our projects and every time we all try to leave with a smile on our faces knowing that we got through it and gave the elderly community a new chance at a more vibrant and healthy life."



Grand Meadows

65-Unit Assisted Living & Memory Care Units
Glencoe, Minnesota

Senior Housing continued . . .



Echo Ridge

87-Unit Assisted Living,
Congregate Housing
Rapid City, South Dakota



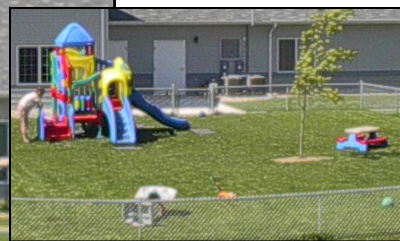
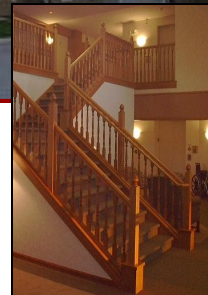
Edgewood Vista

97-Unit Assisted Living,
Memory Care
Brainerd, Minnesota



Crest Ridge Estates

34-Unit Independent Senior Apartments
Creston, Iowa



Linden View Assisted Living

24-Units Assisted Living Facility
Syracuse, Nebraska

Senior Housing continued . . .

Covenant Place of Lenexa

A Continuing Care Retirement Community
Lenexa, Kansas



Skilled Nursing Facility Courtyard



Senior Housing continued . . .



Prairie Vista Village

A Continuing Care Retirement Community
Altoona, Iowa



Town Center
39-Units Independent Living
34-Units Assisted Living
32-Units Skilled Nursing
(105-Units Total)



"Over 8000 units have been developed and constructed under the direction of HDC."

Prairie Vista Village

A Continuing Care Retirement Community
Altoona, Iowa

An inside view...



Assisted Living Unit Kitchen



Skilled Nursing Family Room



Independent Living Dining



Skilled Nursing Private Dining



Village Center Front Entrance



Assisted Living Lobby



Beauty Shop



Physical Therapy



Independent Living Dining



Skilled Nursing Service Kitchen



Skilled Nursing Service Kitchen



Chapel &
Activity Room



Atrium

Other Projects...



73-Unit Assisted Living and Memory Care Pods, Grand Rapids, Minnesota



Stanley Square
24-Unit Apartments & Commercial Space
Stanley, North Dakota

A History of Successfully Completed & In Progress Projects . . .

Name of Project	Year	Units	Location	Description
Arlington Place Addition	2015	14	Red Oak, IA	ALU Wing Addition
The New Homestead IL Expansion	2015	9	Guthrie Center, IA	IL Expansion
Sunset Ridge I Apartments	2015	35	Minot, ND	Apartments
The Pines at Rapids	2015	123	Rapid City, SD	Apartments
Linden Woods Village	2014	116	Gladstone, MO	Independent, Assisted, Skilled Nursing
Hunter's Run Phase II—North	2014	107	Watford City, ND	Apartments
The Bluffs of Williston	2014	148	Williston, ND	Apartments
Kennybrook Village Addition	2014	7	Grimes, IA	Skilled Nursing Addition
Covenant Place of Tulsa	2014	80	Bixby, OK	Independent, Assisted, & Town Center
Northridge Village	2013	107	Ames, IA	Independent, Assisted, Skilled Nursing
Tioga Square Apartments	2013	25	Tioga, ND	Apartments & Mixed Commercial
Hunter's Run Phase I—South	2013	93	Watford City, ND	Apartments
Arabella Manor—Phase 2	2013	37	Alexandria, MN	Apartments
Woodbury Villa	2013	—	Woodbury, MN	Sunroom Remodel
Winchester Meadows	2013	30	Sedalia, MO	Assisted Living Addition
Majestic Pines Senior Living	2013	73	Grand Rapids, MN	Assisted Living & Memory Care Pods
Harvest Hills Apartments	2013	93	Williston, ND	Apartments
Stanley Square	2013	24	Stanley, ND	Apartments & Commercial Space
Sidney Apartments	2013	66	Sidney, MT	Apartments
The Landing	2013	24	Bowman, ND	Apartments & Healthcare Offices
The Colony-Rose Court (Phase IV)	2013	—	Eden Prairie, MN	Laundry & Tub Room Remodel
Summit Condominiums	2013	36	Fargo, ND	Apartment Addition
Woodbury Health Care	2013	—	Woodbury, MN	Remodel
Prairie Heights Apartments	2013	150	Minot, ND	Apartments
Prairie Vista Village	2013	105	Altoona, IA	Independent, Assisted, Skilled Nursing
Coughlin Office Building	2012		Minot, ND	Office Building
Roers Apartments of Tioga	2012	33	Tioga, ND	Apartments
Juniper Ridge	2012	10	Tioga, ND	Townhomes
The Colony - Rose Court	2012		Eden Prairie, MN	Kitchen/Office Remodel
Woodbury Villas	2012		Woodbury, MN	Lobby Remodel

A History of Successfully Completed & In Progress Projects . . .

Name of Project	Year	Units	Location	Description
Roers Apartments	2012	39	Stanley, ND	Apartments
Northern Plains Apartments	2012	144	Minot, ND	Apartments w/Garages
Covenant Place of Lenexa	2012	107	Lenexa, KS	Independent, Assisted, Skilled Nursing
Nordic Hills Apartments	2012	26	Tioga, ND	Senior Apartments
Meadow Ridge Estates	2012		Moberly, MO	Interior Renovation & Kitchen
The Colony - Porte Cochere	2011		Eden Prairie, MN	Nursing Home Remodel
Woodbury Estates & Villa	2011		Woodbury, MN	Remodels
Woodlyn Heights	2011		Inver Grove Heights, MN	Care Center Remodel
Ridgeview Chapel	2011		Sauk Rapids, MN	Remodel
PATH Building	2011		Minot, ND	Flood Damage Remodel
Woodbury Villas	2011		Woodbury, MN	Remodel
The Pines on 37th	2011	141	Minot, ND	Apartments with Garages
Southwood Apartments	2011	156	Minot, ND	Apartments with Garages
Coletrain Apartments	2011	62	Fargo, ND	Apartments
Linden Corners Apartments	2011	16	Stanley, ND	Multi-Residential Housing
Summer Square	2011	12	Maddock, ND	Nursing Home Remodel
Edgewood Vista Village	2011	9	Minot, ND	Patio and Twin Homes
Aspen Wind	2011	46	Cheyenne, WY	Assisted Living/Remodel
Meadow Wind	2011	47	Casper, WY	Assisted Living/Memory Care
Spring Wind	2011	23	Laramie, WY	Assisted Living/Remodel
Edgewood Vista - Canyon View	2010	23	Spearfish, SD	Assisted Living
Meadow Ridge	2010	132	Minot, ND	Apartments & Garages
Birchwood Health Care Center	2010		Forest Lake, MN	Nursing Home Remodel
Sterling Park Care Center	2010		Waite Park, MN	Nursing Home Remodel
Ridgeview Place	2010	14	Sauk Rapids, MN	Memory Care Units
Kennybrook Village CCRC	2010	94	Grimes, IA	Independent, Assisted, Skilled Nursing
Elk Pointe Apartments	2009	72	Minot, ND	Apartments & Garages
Park Gardens Addition	2009	14	Fergus Falls, MN	Memory Care Units
Grand Meadows	2009	65	Glencoe, MN	Assisted Living/Memory Care

A History of Successfully Completed & In Progress Projects . . .

Name of Project	Year	Units	Location	Description
Hampton Health Care Center	2009	23	Hampton, IA	Assisted Living/NH Addition
Edgewood Vista	2008	198	Bismarck, ND	Congregate/Assisted/Memory Care
Regional Justice Complex	2008		Red Lake, MN	Law Enforcement & Courts
DNR Complex	2008		Red Lake, MN	Head house & Greenhouse
McNutt Assisted Living	2008	22	Alexandria, MN	Assisted Living
Woodbury Health Care Center	2008		Woodbury, MN	Nursing Home Remodel
Birchwood Health Care Center	2008		Forest Lake, MN	Nursing Home Remodel
Sterling Manor	2008		Willmar, MN	Garages/Maintenance Room
West River Townhomes	2007		Detroit Lakes, MN	Townhomes
Sedalia Assisted Living	2007	47	Sedalia, MO	Assisted Living
Red Lake Boys & Girls Club II	2007		Red Lake, MN	Boys & Girls Club
Murray County Human Svcs Bldg.	2007		Slayton, MN	Office Building
Sterling Manor	2007		Willmar, MN	Remodel Garages into Apts.
Municipal Liquor Store	2007		Perham, MN	Liquor Store
Minnesota Veterans Cemetary	2007		Little Falls, MN	Maintenance Building
Pine River Samaritan House	2007	16	Pine River, MN	Assisted Living
GSS/Missouri Synod Joint Facility	2006	48	Fargo, ND	Church/Assisted Living
Edgewood Vista	2006	184	Fargo, ND	Congregate/Assisted/Memory Care
Red Lake Boys & Girls Club I	2006		Red Lake, MN	Boys & Girls Club
Battle Lake Good Samaritan	2006	28	Battle Lake, MN	Assisted Living
Grand Rapids Independent Living	2006	60	Grand Rapids, MN	Independent Sr. Housing
RCCC Villa—HUD 202	2006	15	Ruthven, IA	Senior Housing
Heritage Maples Senior Housing	2006	42	East Grand Forks, MN	Independent Sr. Housing
Park Gardens Apartments	2006	50	Fergus Falls, MN	Assisted Living
Winchester Meadows	2005	54	Sedalia, MO	Independent Sr. Housing
Jourdain/Perpich Care Center	2005	26	Red Lake, MN	Sr. Housing/Nutrition Center
Samaritan House II and III	2005	32	Brainerd, MN	Assisted Living
Pioneer Memorial Care Center	2005	14	Erskine, MN	Addition & Remodel
Albert Lea Good Samaritan Ctr.	2005	24	Albert Lea, MN	Assisted Living
Alexandria Senior Housing	2004	37	Alexandria, MN	Independent Sr. Housing

A History of Successfully Completed & In Progress Projects . . .

Name of Project	Year	Units	Location	Description
Ellendale Assisted Living	2004	20	Ellendale, MN	Assisted Living
Moberly Senior Housing	2004	44	Moberly, MO	Congregate Housing
Green Lea Manor	2004	22	Mabel, MN	Assisted Living
Karlstad Care Center	2004	24	Karlstad, MN	Assisted Living
Faulton Health Care Center	2004	20	Faulton, SD	Assisted Living
Edgewood Vista	2004	97	Brainerd, MN	Assisted Living/Memory Care
Edgewood Vista	2004	84	Hermantown, MN	Independent Sr. Housing
Humboldt Memorial Hospital	2004	23	Humboldt, IA	Sr. Housing & Storage Addition
Sunset Homes	2003	19	Kenyon, MN	Sr. Housing/Clinic
Annandale Care Center	2003	8	Annandale, MN	NH Addition & Remodeling
Cherry Hills Estates	2003	20	Valentine, NE	Assisted Living
Sterling Manor	2003	36	Willmar, MN	Independent Sr. Apartments
Edgewood Vista	2003	76	Spearfish, SD	Assisted Living/Memory Care
Edgewood Vista	2003	14	Virginia, MN	Alzheimer Group Home
Greater Community Hospital	2002	34	Creston, IA	Independent Sr. Apartments
Wolf Memorial Good Samaritan	2002	20	Albion, NE	Assisted Living
Albert Lea Good Samaritan	2002	16	Albert Lea, MN	Congregate Housing
Edgewood Vista	2002	60	Virginia, MN	Assisted Living/Congregate
Edgewood Vista	2002	74	Hermantown, MN	Assisted Living/Memory Care
Blum Office Building	2002		Rochester, MN	Commercial Office Space
Valentine Dialysis Unit	2002		Valentine, NE	Hospital Renovation
Syracuse Good Samaritan	2001	24	Syracuse, NE	Assisted Living
Ruthven Community Care Ctr.	2001	18	Ruthven, IA	Assisted Living
Cherry Hills Estates	2001	39	Valentine, NE	Independent/Assisted Living
Elmhurst Commons	2001	8	Braham, MN	Garages
Edgewood Vista	2001	24	Virginia, MN	Alzheimer Group Living
Edgewood Vista	2001	130	Virginia, MN	Assisted Living
Ashbrook Apartments	2001	41	Iowa Falls, IA	Assisted Living
Echo Ridge Good Samaritan	2000	87	Rapid City, SD	Assisted/Congregate Housing
Westbrook Good Samaritan	2000	15	Westbrook, MN	Nursing Home Addition

A History of Successfully Completed & In Progress Projects . . .

Name of Project	Year	Units	Location	Description
Bonell Good Samaritan	2000	33	Greeley, CO	Congregate Housing
MRAP LLC	2000	48	Willmar, MN	Upscale Market Rate
Springvale Senior Living	2000	32	Humboldt, IA	Ind. Sr. Apts./Home Health
Park Place	2000	50	Owatonna, MN	Assisted/Congregate Housing
Nemaha Good Samaritan	2000	24	Auburn, NE	Assisted Living
Grandview Good Samaritan	2000		St. Peter, MN	Admin./Activity/Dining Addition
Edgewood Vista	2000	10	Fremont, NE	Memory Care Group Living
Edgewood Vista	2000	10	Hastings, NE	Memory Care Group Living
Edgewood Vista	2000	10	Omaha, NE	Memory Care Group Living
Edgewood Vista	2000	32	Hermantown, MN	Assisted Living/Memory Care
Lost Loon Ranch Lodge	2000		Hermosa, SD	Remodel/Addition
Meadow Lakes	1999	65	Rochester, MN	Congregate Housing
Davenport Good Samaritan	1999	28	Davenport, IA	Congregate Housing
Geneseo Good Samaritan	1999	12	Geneseo, IL	Congregate Housing
Villa Health Care Center	1999	9	Mora, MN	Nursing Home Addition
Grant County Housing	1999	6	Elbow lake, MN	Market Rate Housing
Grant County Housing	1999	6	Ashby, MN	Market Rate Housing
Grant County Housing	1999	6	Hoffman, MN	Market Rate Housing
Grandview Good Samaritan Ctr.	1999	28	St. Peter, MN	Congregate Housing
Edgewood Living Communities	1999	44	Hermantown, MN	Assisted Living/Memory Care
Annandale Care Center	1999	30	Annandale, MN	Congregate Housing
Pioneer Memorial Care Center	1999	28	Erskine, MN	Congregate Housing
Algona Good Samaritan Center	1999	28	Algona, IA	Congregate Housing
Windom Good Samaritan Center	1999	24	Windom, MN	Assisted Living
Elmhurst Commons	1998	36	Braham, MN	Congregate Housing
Deuel County Good Samaritan Ctr.	1998	12	Clear Lake, SD	Congregate Housing
Park River Good Samaritan Ctr.	1998	12	Park River, ND	Congregate Housing
Pleasantview Good Samaritan Ctr.	1998	28	St. James, MN	Congregate Housing
Pleasant Manor	1998	36	Faribault, MN	Congregate Housing
Edgewood Living Communities	1998	24	Omaha, NE	Assisted Living

A History of Successfully Completed & In Progress Projects . . .

Name of Project	Year	Units	Location	Description
Edgewood Living Communities	1998	10	Norfolk, NE	Assisted Living
Edgewood Living Communities	1998	10	Grand Island, NE	Assisted Living
Edgewood Living Communities	1998	10	Columbus, NE	Assisted Living
The Country Villa	1997	47	Sartell, MN	Assisted Living/Home Health
Tyndall Good Samaritan Center	1997	12	Tyndall, SD	Congregate Housing
Albert Lea Good Samaritan Ctr.	1997	28	Albert Lea, MN	Congregate Housing
E. Grand Forks Good Samaritan	1997	24	East Grand Forks, MN	Assisted Living
E. Grand Forks Good Samaritan	1997	28	East Grand Forks, MN	Congregate Housing
Pioneer Memorial Care Center	1997		Erskine, MN	Alzheimer Special Care Addition
Bonell Good Samaritan Center	1997	30	Greeley, CO	Congregate Housing
Hoffman Good Samaritan Center	1997		Hoffman, MN	Addition/Remodeling
Mary Jane Brown Good Samaritan	1997	28	Luverne, MN	Congregate Housing
Maplewood Good Samaritan	1997		Maplewood, MN	NH Addition/Renovation
Steeple Pointe	1997	59	Osseo, MN	Assisted Living/Congregate
Pipestone Good Samaritan	1997	28	Pipestone, MN	Congregate Housing
Edgewood Vista	1997	24	Sioux Falls, SD	Assisted Living
Sunrise Terrace	1997	20	Slayton, MN	Congregate Housing
Valley Vista Good Samaritan	1997	12	Wamego, KS	Congregate Housing
Fairfax Community Home	1996		Fairfax, MN	Addition & Remodeling
Country View Estates	1996	20	Fairfax, MN	Congregate Housing
Clearbrook Good Samaritan Ctr.	1996		Clearbrook, MN	Addition & Remodeling
Lakeside Community Home	1996	6	Dassel, MN	Addition & Remodeling
Public Rental Housing	1996	16	Belgrade, MN	Congregate Housing
Whispering Pines Good Samaritan	1996	14	Pine River, MN	Nursing Home Addition
Pleasant View Center	1996	12	St. James, MN	Special Care Addition
City of Benson	1996	30	Benson, MN	Congregate Housing
St. Luke's Lutheran Care Center	1996	30	Blue Earth, MN	Congregate Housing
Woodland Acres	1996	30	Brainerd, MN	Congregate Housing
Country Manor Apartments	1995	20	Sartell, MN	Congregate Housing
Heritage Place	1995	20	Foley, MN	Congregate Housing

A History of Successfully Completed & In Progress Projects . . .

Name of Project	Year	Units	Location	Description
Prince of Peace	1995	40	Hutchinson, MN	Congregate Housing
Hilltop Terrace	1995	24	Waterville, MN	Congregate Housing
Deer River Health Care Center	1995		Deer River, MN	Clinic/Remodel Hospital
Lincoln Lane Villa	1995	8	Hendricks, MN	Congregate Housing
Swan Lake Lodge	1995		Hoven, SD	Hunting Lodge
Parkview Apartments	1995	20	Belview, MN	Apts. & Nursing Home Addition
Olivia Senior Housing	1995	30	Olivia, MN	Congregate Housing
Maple Lawn Nursing Home	1995	24	Fulda, MN	Congregate Housing
Oak Terrace Estates	1995	30	Sac City, IA	Congregate Housing
Northern Pines Good Samaritan	1995		Blackduck, MN	Nursing Home Remodel/Addition
Park Manor Apartments	1995	32	Braham, MN	Remodel Apartments
Moore Apartments	1994	14	Clarion, IA	Congregate Housing
Riverside Villa	1994	36	Pine River, MN	Congregate Housing
O'Brien Court	1994	30	Tracy, MN	Congregate Housing
Hopkins Care Center	1994		Hopkins, MN	Remodel Nursing Home
Innsbrook Care Center	1994		New Brighton, MN	Remodel Nursing Home
Villa Health Care Center	1994		Mora, MN	Remodel Nursing Home
Christian Nursing Center	1994		Willmar, MN	Remodel Nursing Home
St. Mary's Care Center	1994		Winsted, MN	Remodel Nursing Home
Lower Brule Resort	1994		Lower Brule, SD	Motel & RV Park
HHH Inc.	1994		Sartell, MN	Remodel Nursing Home
Pine Meadows	1993	40	Antigo, WI	Congregate Housing
Meadow's-On-Main	1993	26	Renville, MN	Congregate Housing
Renville Community Center	1993		Renville, MN	Community Center
The Meadows	1993	45	Clarion, IA	Congregate Housing
Green Prairie Place	1993	36	Plainview, MN	Congregate Housing
Lakeside Community Home	1993		Dassel, MN	Remodel Nursing Home
Health Dimensions	1993		Cambridge, MN	Corporate Office Building
Pine Tree Villa	1992	30	Big Fork, MN	Congregate Housing
Pleasant View	1992	31	Appleton, MN	Congregate Housing

A History of Successfully Completed & In Progress Projects . . .

Name of Project	Year	Units	Location	Description
Prairie Park Place	1992	30	Clara City, MN	Congregate Housing
Oak Terrace	1992	15	Gaylord, MN	Congregate Housing
Yorkshire Manor	1992		Minneapolis, MN	Remodel Nursing Home
Kinnic Care Center	1992	65	River Falls, WI	Nursing Home
Orchard Estates	1991	40	Glencoe, MN	Congregate Housing
Comstock Court	1990	30	Deer River, MN	Congregate Housing
Bryant House	1990	21	Maple Plain, MN	Congregate Housing
Evergreen Village	1990	40	Amery, WI	Congregate Housing
Jergens Estates	1990	30	Forest Lake, MN	Congregate Housing
Benet Place	1989	39	Watertown, SD	Congregate Housing
Manitou Place	1989	45	White Bear Lake, MN	Congregate Housing
Belmont Manor	1988	36	Jackson, MN	Congregate Housing
Parkwood	1988	60	Pierre, SD	Congregate Housing
Riverwood Village	1988	45	Cambridge, MN	Congregate Housing
High Point Apartments	1987	12	St. Cloud, MN	Student Housing
Country Manor Apartments	1986	36	Sartell, MN	Congregate Housing
Moundsview Apartments	1986	60	River Falls, WI	Congregate Housing
Benedict Village	1986	67	St. Cloud, MN	Congregate Housing
Villages of Bagley	1986	20	Bagley, MN	Congregate Housing
Villages of Mora	1986	35	Mora, MN	Congregate Housing
Countryside Apartments	1986	54	Sleepyeye, MN	Congregate Housing
HHH Inc.	1986		Sartell, MN	Store/Pharmacy/Day Care
Pioneer Memorial Care Center	1985	66	Ersline, MN	Remodel Nursing Home
HHH Inc.	1985		Sartell, MN	Chapel/Meditation Room/Offices
Woodland Acres	1984	57	Brainerd, MN	Apartments
Woodland Acres	1984	20	Brainerd, MN	Garages
Pine View Apartments	1983	41	Carlton, MN	Congregate Housing
Woodland Acres	1982	80	Brainerd, MN	Nursing Home Addition
Woodland Acres	1982	60	Brainerd, MN	Apartments & Commons Area
HHH Inc.	1982		Sartell, MN	Extended Services

A Progressive History and Strong Commitment . . .

HDC Development Companies, LLC is a limited liability company offering construction management, consulting and general contracting services continuously in the upper Midwest and Western States. Our workload has a consistent mix of both new construction and remodeling of congregate housing, assisted living, memory care, foster care, nursing home units, independent senior apartments and hospitals. It also includes multi-family housing, commercial construction and renovation.

For more information e-mail info@hdcdevelopment.com or call (320) 363-4733.



The Bluffs of Williston

148-Unit Apartments
Williston, North Dakota



Edgewood Vista

127-Units Assisted Living Facility
Hermantown, Minnesota



Roers Apartments

39-Unit Apartments
Stanley, North Dakota

HDC

DEVELOPMENT COMPANIES LLC

Contractors & Construction Management
703 19th Ave NE, St Joseph, MN 56374
PH: 320.363.4733 FX: 320.363.4719
info@hdcdevelopment.com
www.hdcdevelopment.com

HDC has helped Lutheran Social Services grow by the completion of 52 units in North Dakota over a 2-year time period. HDC's experienced management team, highly qualified and knowledgeable job superintendents and office personnel have worked closely with the Lutheran Social Services team from the development of the ideas, through project evaluation, design, construction and marketing.

